

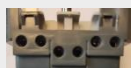
1 INSTRUCTIONS AND RECOMMENDATIONS



Switch off the mains before commencing any work



Strip the wires back for about 12mm



Mechanisms with terminals with automatic connections



For single units, use casings 50mm deep, diameter 67 or 68mm

2 WIRING



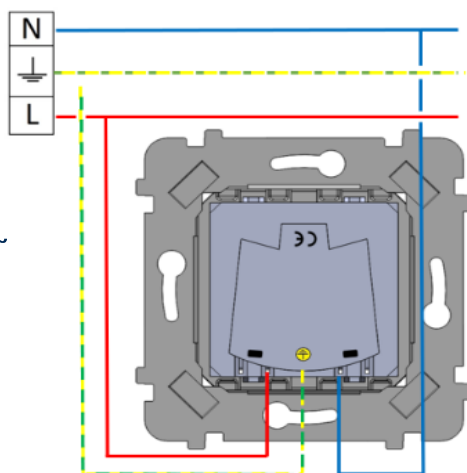
Installation by a person with the appropriate skills.

N neutral – blue cable

L phase – red cable

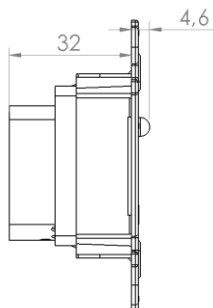
 **earth** – green/yellow cable

250V~
16A

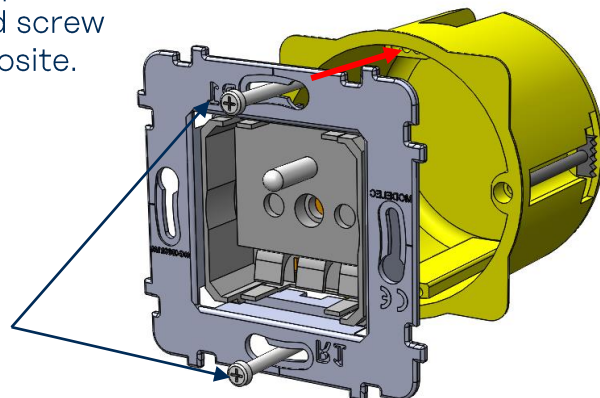


3 FITTING

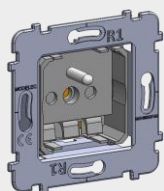
After wiring according to the instructions, place the mechanism in the flush-mount box and screw on the plate according to the diagram opposite.



Screws supplied with the flush-mount box.

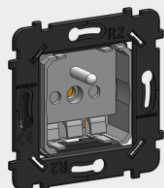


4 TABLE OF RELEVANT REFERENCES

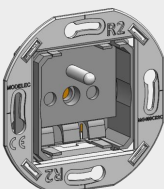


Reference and description:

087-320G S 2P+E SOCKET



087-320B S 2P+E SOCKET



087-320W S 2P+E SOCKET

Compatible with:

Confidence Collection

Hitera, Karo and DésirCollection

Iris Collection

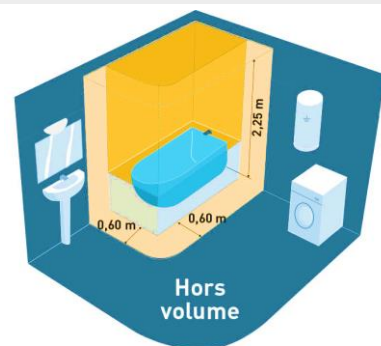
5 CERTIFICATIONS

The product complies with EC 60884-1:2002 + A1: 2006 + A2: 2013

Placement recommendations for compliance with NF C 15-100 or CENELEC:
2P+E MODULE 16A

IP CLASS: IP21

To be placed in the "Out of Volume" area only



Volume 0

Volume 1

Volume 2