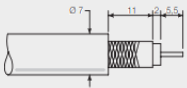


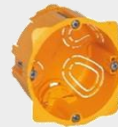
1 INSTRUCTIONS AND RECOMMENDATIONS



Switch off the mains before commencing any work

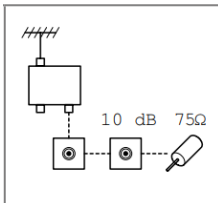


Strip the wires back along a length of about 19mm



For single units, use casings 50mm deep, diameter 67 or 68mm

2 WIRING AND PROPERTIES

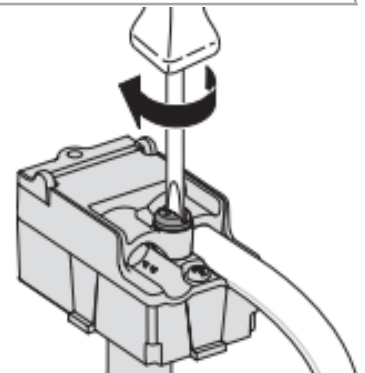
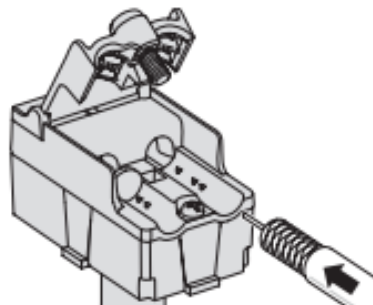


	DC	Back voice	Band 1	VHF	UHF
		4-30 MHz	47-68 MHz	120-470 MHz	470-862 MHz
	dB	mA	MHz	MHz	MHz
Feedthrough TV socket	< 1 dB	500mA	TV		

Technical characteristics

Impedance: 75 Ohms
Connection: TV: male
Standards:

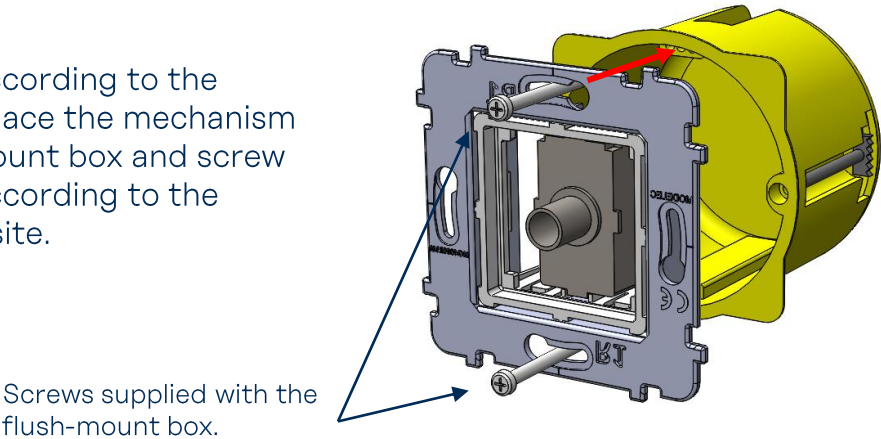
NF EN 50083
UTE 90123
UTE 90125



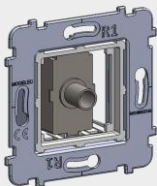
- Unscrew and open the rear compartment
- Insert the stripped cable and the suppressor
- Screw the compartment back on

3 FITTING

After wiring according to the instructions, place the mechanism in the flush-mount box and screw on the plate according to the diagram opposite.

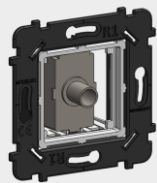


4 TABLE OF RELEVANT REFERENCES

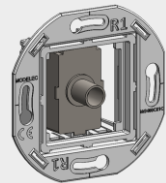


Reference and description:

087-360G S TV SOCKET



087-360B S TV SOCKET



087-360W S TV SOCKET

Compatible with:

Confidence Collection

Hitera, Désir, Karo Collection

Iris Collection

5 CERTIFICATIONS

The product complies with the NF EN 50083 – UTE 90123 – UTE 90125 standard