



Black Satin 352



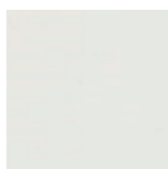
White Porcelain 361

## 1 GENERAL INFORMATION

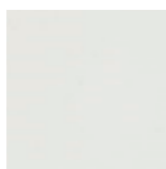
- **Material:** Polycarbonate / Porcelaine
- **Weight:** 10g PC / 50g Porcelaine
- **Fitting:** 1 minute
- **Compatible flush-mount boxes:** LEG o80031



## 2 FINISHES



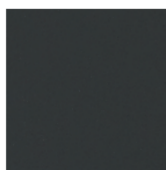
White Satin  
351



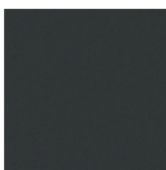
White  
Soft Touch  
353



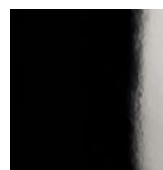
White  
Porcelain  
361



Black Satin  
352

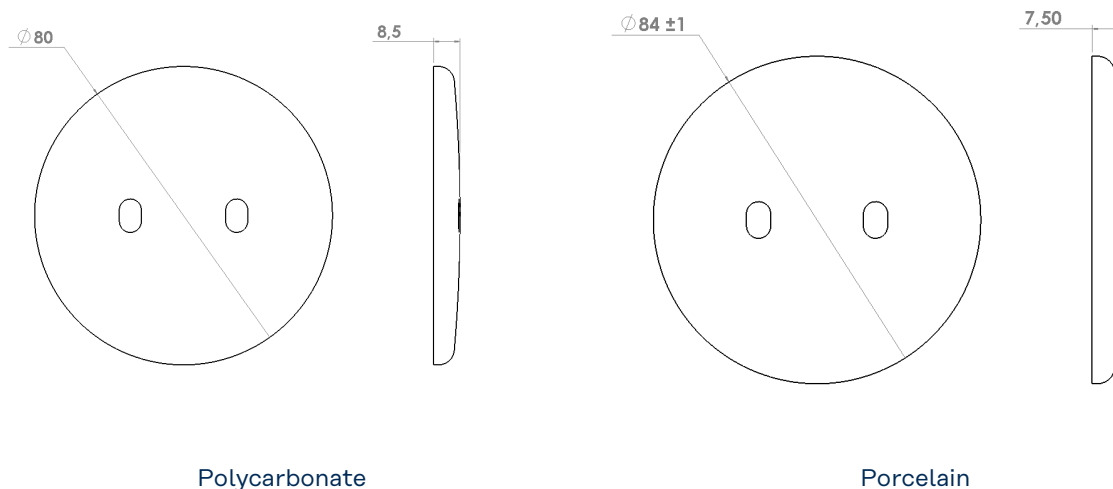


Black  
Soft Touch  
354

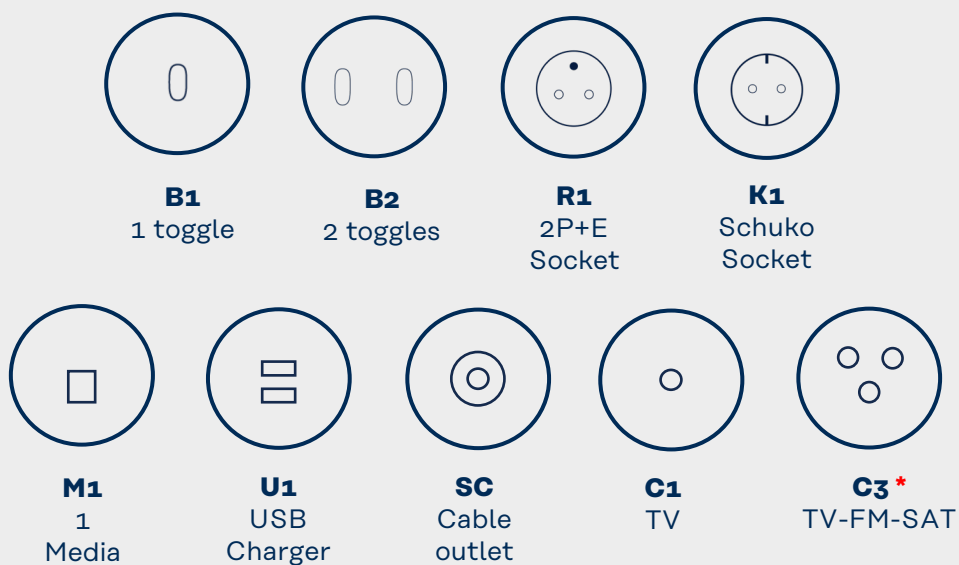


Black  
Porcelain  
362

## 3 FORMATS Dimensions in mm



## 4 AVAILABLE FUNCTIONS



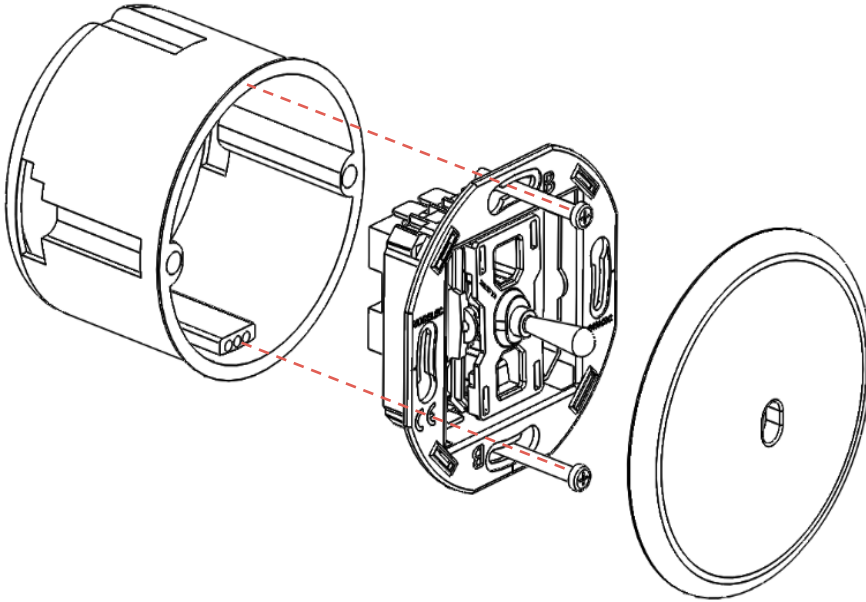
### GLOSSARY

**Toggle:** Two-way / push-toggle / cross switch / roller shutter

**Média:** RJ45 / HDMI / USB DATA / HP

\* : porcelain only

## 5 FITTING



1. Wire the mechanism according to the corresponding diagram.
2. Screw on the mechanism plate using the 2 screws supplied with the box.
3. Simply snap the cover plate onto the mechanism by pushing the clips in to their maximum depth.

